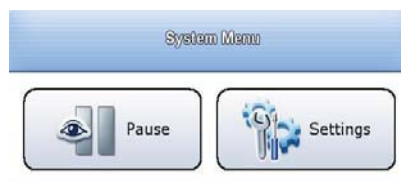


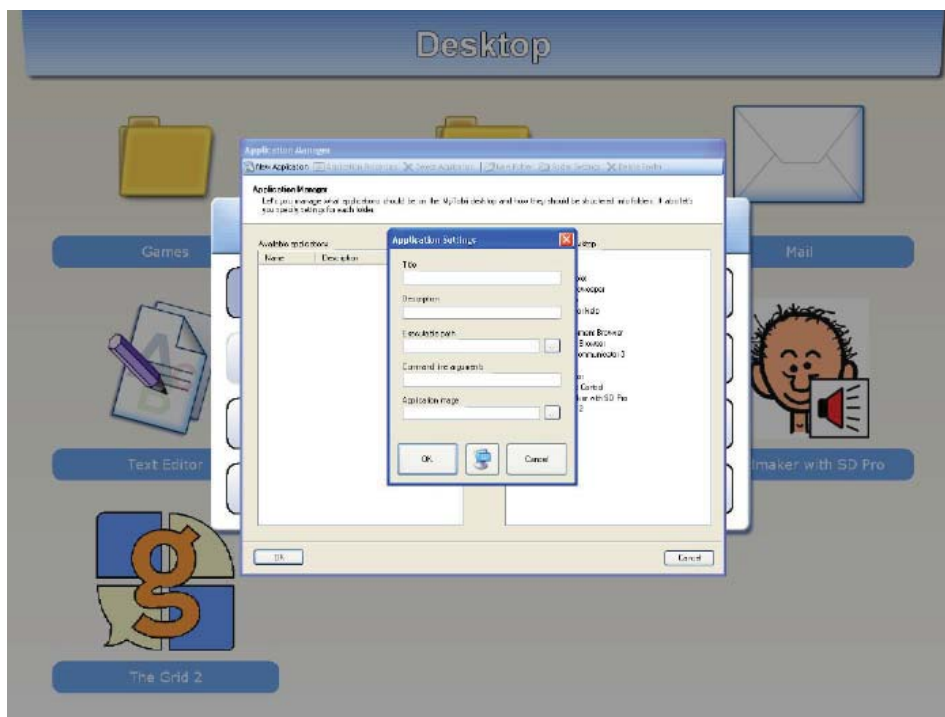
ADDING PROGRAMS ONTO THE MYTOBII DESKTOP

1. Enter Settings.

2. Go to Application Manager.




3. Click on “New Application” in the top right hand corner.



4. Title: text you want to appear on the MyTobii Desktop (i.e.- Erin’s communication pages).

5. Executable path: Click on the button to the right of this field. Find the document or program that you want to add to the MyTobii desktop.

6. Application Image: Click on the  button to the right of this field. Find the image that you want associated with this program/file (i.e.-a photo of Erin to go with her communication pages, or a screen shot of the communication pages).

Please refer to your MyTobii P10 manual for further information.