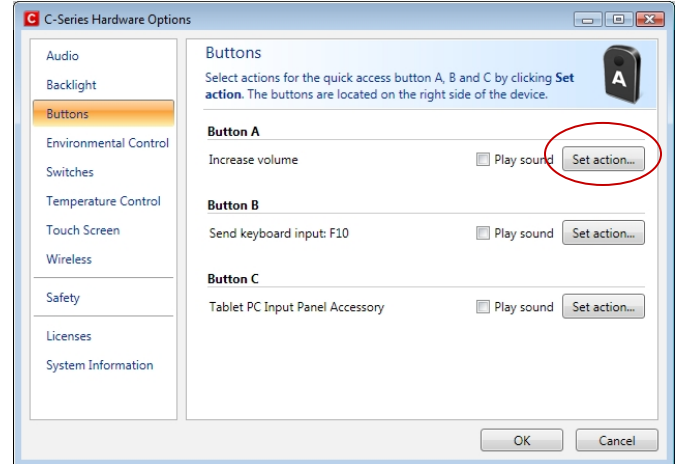




Programming Quick Access Buttons

Example One: Program Button A to Increase Volume

1. Open **C-Series Hardware Options**
2. Select **Buttons**
3. Under Button A, select **Set action**
4. Choose **Volume**
5. Select **Increase Volume**
6. Select **Ok**



Example Two: Program Button B to act as F10 key

1. Under Button B, select **Set action**
2. Choose **Set Input**
3. Choose **Send Keyboard Input**
4. From the drop down menu choose **F10**
5. Select **Ok**

Example Three: Program Button C to Open On-Screen Keyboard

1. Under Button C, select **Set action**
2. Select **Start Program**
3. Select **Browse**
4. Double click **Computer** on the left
5. Double click **C drive**
6. Double click **Program Files**
7. Double click **Common Files**
8. Double click **Microsoft shared**
9. Double click **ink**
10. Scroll down until you find **TabTip**
11. Double click **TabTip**
12. Select **Ok**
13. **Note: If this programming has been previously done on your C-Series device, you will see Tablet PC Input Panel Accessory as an option. Select that option.**

Note: You can resize this onscreen keyboard by clicking and dragging the corners.

