

**Getting**Started

# Getting Started with MyTobii P10

tobii



## Getting Started with MyTobii P10

This Guide is intended to help you set up and start using your MyTobii P10.

The MyTobii P10 can be used with a variety of mounts. The Daessy mounting system (*See\**) attaches to the lower portion of the P10 and requires spacers. The Ergotron mounting system attaches to the upper portion of the P10.

### Attaching the Ergotron Mount

1. The base of the Ergotron desk mount that comes with your MyTobii needs to be attached first. Ensure that the base is mounted securely on a table that can support the weight of the P10, even with the mounting arm extended. (*see A*)

2. Add the second component of the mount and tighten with Allen key. (*see B*)

3. On a surface that will not scratch the screen, carefully lay the P10 face down. Use the four plastic screws to attach the arm of the Ergotron desk mount, putting them in at opposite corners first. The spring needs to be facing towards the bottom of the P10. (*see C*)

4. Carefully lift up the P10 with mounting arm and attach it to the rest of the mounting system. (*see D*)

### Turning on the MyTobii P10

1. Put the power cord into the bottom of the P10 and plug in.
2. Press the front button on the P10 to turn the unit on. Turn off the P10 by exiting the MyTobii software, then in the Windows Task Bar choose: Start Menu/Shut Down.
3. Press the buttons on the upper back of the device to adjust volume.



*P10 with Power cord, AC adaptor, and Ergotron mounting set*

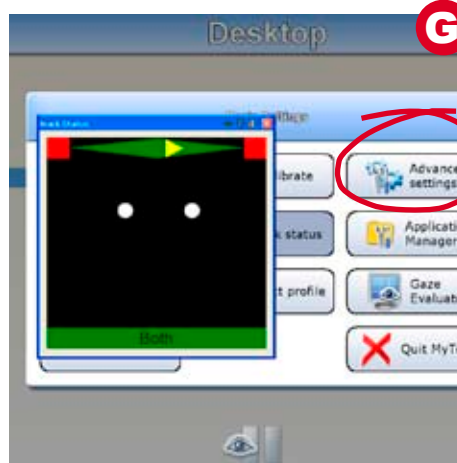


*(\*) P10 with Daessy mount*





1. Within the MyTobii desktop go into the **Settings** menu. You can do this by touching the lower, right hand corner of the screen and selecting the Settings Menu button that appears on the screen.  
(see F)



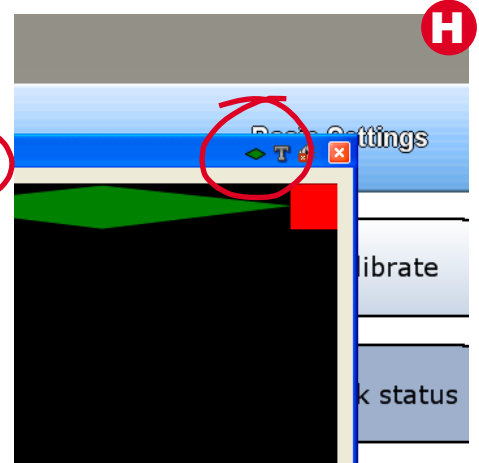
2. In the **Settings** Menu, choose **Track Status**.  
A window will appear that shows if the user's eyes are registering with the system. The yellow triangle at the top of the track status box should be in the middle, this shows that the user is at the ideal distance for eye control. Two white circles representing the user's eyes should be as close to the center of the box as possible. An indicator bar at the bottom of the Track Status box will turn green if it is able to track the user's eyes.

If the user is only using one eye, you might need to make adjustments in the **Advanced Settings** menu.

(see G)

If the distance meter does not appear when you open the track status box, click on the small, green diamond in the upper right hand corner of the track status box.

(see H)



3. Close the Track Status box by touching the upper right hand corner of that window to close it or by clicking on the **Track Status** button in the Settings menu.
4. Go into the **Calibration** menu. It will start immediately.
5. Once Calibration is completed, **close** the **Settings** menu. You are now at the MyTobii desktop (see next section).

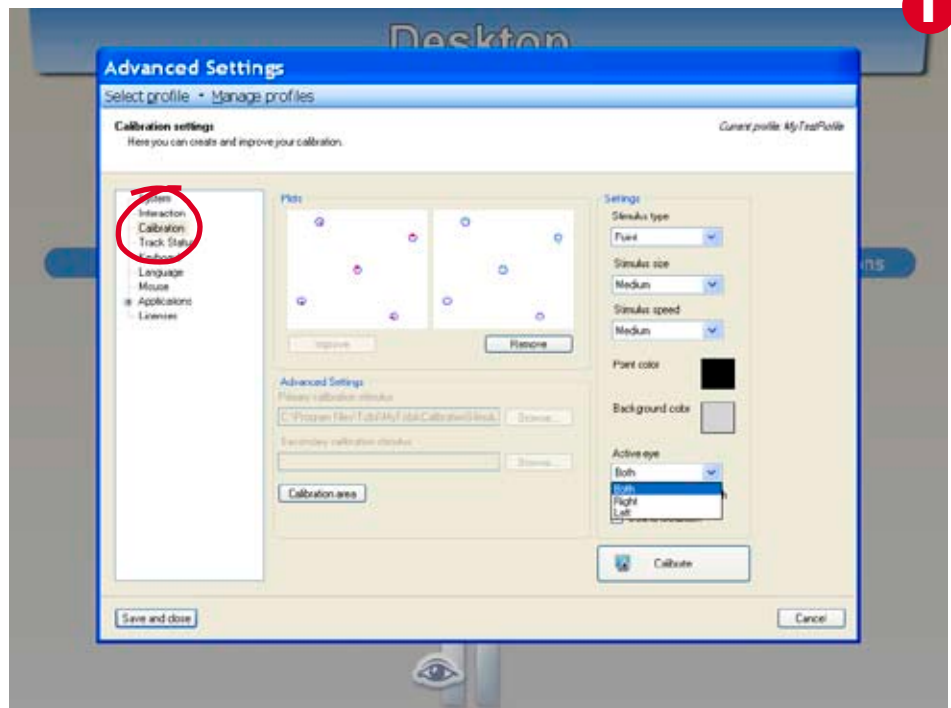
If Calibration failed, try one more time. If it fails again, go into **Advanced Settings** (this menu is not eye control accessible).

*Note: In the Settings menu, you are able to choose the type of accessing method (dwell, blink, switch). Generally, try dwell on the default dwell setting (approx. 1000ms) for at least 5 minutes! This is often the easiest mode of eye control and is best to try first before ruling it out as an option.*

## If Calibration failed, open Advanced Settings.

1. Choose Calibration (on left side of screen). (See I)
2. In this menu, you are able to change the colors, stimulus type, and active eye for calibration. Please refer to the manual for more details.
3. Choose Calibrate again.
4. If Calibration was successful, close "Advanced Settings" and close the "Settings" menu until you are at the MyTobii Desktop.
5. If Calibration is still unsuccessful, you might need to adjust the Calibration Area. Please refer to the manual, contact your MyTobii Representative or Technical Support if you are unfamiliar with this function.

**Note:** In this menu, you are also able to change the calibration stimulus from a dot to a picture and can change the size and speed of the stimulus.



## How to determine appropriate button size for Eye Control:

For determining appropriate grid size for a new user, choose "Gaze Evaluator" from the Basic Settings menu. This can only be used with a USB keyboard plugged into the MyTobii P10, so you have control over which grid sizes the user can access. Choose the "Grid Evaluator" to assess appropriate grid and button size.

Grid Evaluator:

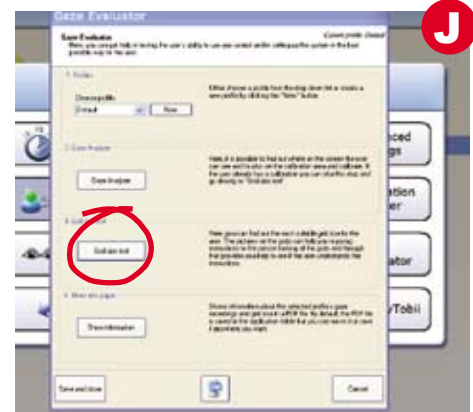
1. Plug in your USB keyboard.
2. Open Grid Evaluator. (See J)
3. Choose #3 "Grid Size Test"
4. A 2x1 grid will automatically open. Instruct the user to look at one item and then the other. You will know that the user has selected a button because it will change to a dark grey color at the time it is selected.

5. Move to the next grid size by using the right arrow key on your keyboard.
6. When you have found the appropriate grid size, hit ESC on your keyboard.
7. Now you know what grid size is appropriate for your user! You can go into your communication software and choose a sample layout that matches that size.

For further assistance, please refer to your MyTobii P10 manual, other P10 Quick-guides, and/or contact Technical Support.

Please join the MyTobii Community, a virtual meeting place for all MyTobii users. Find information, ask questions and share ideas with people from around the world.

Visit [www.mytobiicomunity.com](http://www.mytobiicomunity.com)



**Sweden**  
Tobii Technology AB  
Karlsrovägen 2D  
S-182 53 Danderyd  
Sweden  
+46 8 663 69 90 Phone  
+46 8 30 14 00 Fax  
sales@tobii.com

**USA**  
Tobii ATI  
333 Elm Street  
Dedham, MA 02026  
USA  
+1-800-793-9227 Toll free  
+1-781-461-8200 Office  
+1-781-461-8213 Fax  
sales.us@tobii.com

**Germany**  
Tobii Technology GmbH  
Niedenau 45  
60325 Frankfurt am Main  
Germany  
+49 69 24 75 03 40 Phone  
+49 69 24 75 03 429 Fax  
sales.de@tobii.com

**Japan**  
Tobii Technology, Ltd.  
3-4-13 Takanawa, Minato-ku  
Tokyo 108-0074  
Japan  
+81-3-5793-3316 Phone  
+81-3-5793-3317 Fax  
sales.jp@tobii.com

**mytobii**  
[www.tobii.com](http://www.tobii.com)