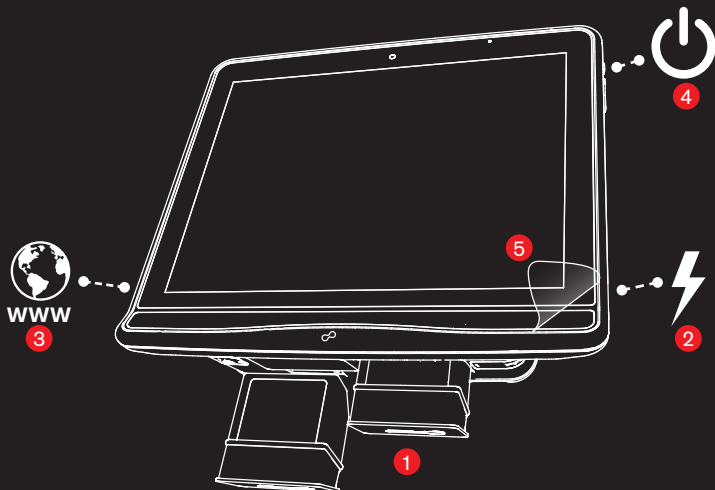


Tobii Dynavox I-Series+ Quick Start Manual



1. Insert Batteries
2. Connect Power
3. Connect LAN (optional)
4. Power on the unit
5. Peel off screen protector

IMPORTANT!

Read the **Safety & Compliances** and **Warranty** documents included in the package **before** proceeding with the first startup of your device.

The full version of the I-Series+ User's Manual can be found on the device as a PDF document, accessible from the I-Series Welcome guide or the desktop.

During the startup of the I-Series+ device you might be asked to enter the I-Series Product Key and Windows Product Key.

You can find the Keys here:

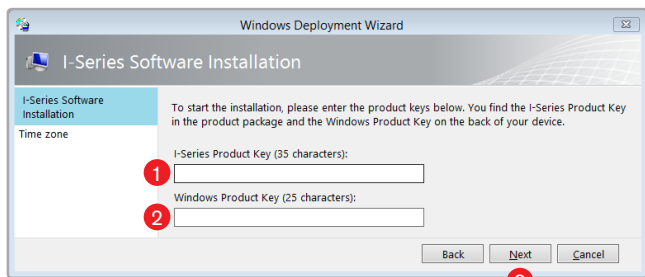
- **I-Series Product Key** - on the “Your I-Series Configuration Sheet”
- **Windows Product Key** - on a separate card in the documentation package.

Total setup time ≈ 45 min, not including the Welcome Guide.

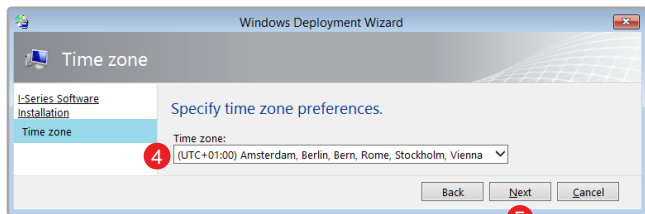
The process

1. Enter the I-Series Product Key
2. Enter the Windows Product Key
3. Select Next

This setup “Deploy” is used to configure the device according to the specifications of the order (language, time zone, software, etc).



4. Select Time Zone in Drop-down list
5. Select Next



6. Follow the on-screen instructions