

Getting Started with the Tobii CEye



tobii

Celebrating Communication

Tobii CEye Getting Started Guide

Content subject to change without notice.

Please check Tobii web site www.tobii.com for updated versions of this manual.

Guide Version 1.5

03/2012

All rights reserved.

© Tobii Technology AB

The information contained in this document is proprietary to Tobii Technology. Any reproduction in part or whole without prior written authorization by Tobii Technology is prohibited.

US Patent 7, 572,008

Tobii_GettingStartedGuide_CEye_V1_5_01032012_UsEng

Epilepsy Warning:

Some people with Photosensitive Epilepsy are susceptible to epileptic seizures or loss of consciousness when exposed to certain flashing lights or light patterns in everyday life. This may happen even if the person has no medical history of epilepsy or has never had any epileptic seizures. A person with Photosensitive Epilepsy would also be likely to have problems with TV screens, some arcade games, and flickering fluorescent bulbs. Such people may have a seizure while watching certain images or patterns on a monitor, or even when exposed to the light sources of an eye tracker. It is estimated that about 3-5% of people with epilepsy have this type of Photosensitive Epilepsy. Many people with Photosensitive Epilepsy experience an "aura" or feel odd sensations before the seizure occurs. If you feel odd during use, move your eyes away from the eye tracker.

Getting Started with the CEye

This guide is intended to help you set up and start using your CEye.

The CEye is a modular eye tracking system that can be attached to your C-Series device.

Attaching the CEye

Ensure that the C-Series device is turned off and that the batteries have been removed. Place the C-Series face down on a non-scratchy surface. Use the Torx I0 that came with the CEye to screw in the CEye module to the bottom of the C-Series device. (see pictures to right)

When the CEye is securely attached to the C-Series device, insert the batteries and turn on the device.

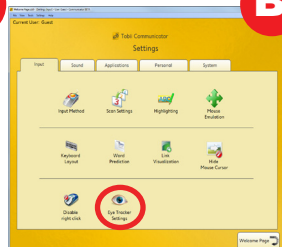
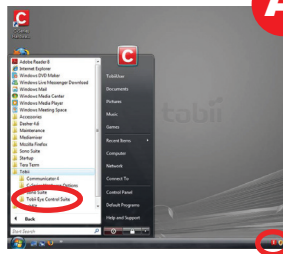


Initial Setup of Eye Control

The required software for the CEye module is the Tobii Eye Control Suite. The latest version of this software will be on a USB stick delivered with your CEye. For detailed instructions on how to install the required software from the USB stick, see the **Tobii C-Series User's Manual > Tobii CEye Module & Eye Control > Installation of Eye Control Software from USB Stick**. Once the installation is complete, to access the track status and calibration features in the Windows environment, open the Tobii Eye Control Suite. Select the **Start Menu > All Programs > Tobii > Tobii Eye Control Suite > Tobii Eye Control Options**. (see A)

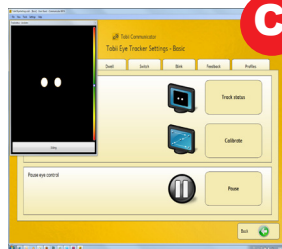
If you have Communicator installed on your C-Series device, follow the steps below:

1. Launch Tobii Communicator.
2. At the Welcome Page, choose **Settings > Eye Tracker Settings**. (see B)



3. In the Basic Settings menu, choose Track Status. (see C)

Tip: Use the distance meter at the right to gauge the appropriate distance the user should be from the device. The central, green area is the ideal position range.



4. Choose Calibrate.

Calibration allows the eye control system to adjust to an individual's eye movements. A blank screen will appear and a target will move across the screen. The user must follow that target with their eyes.

Tip: Receiving a results box demonstrating the eye tracking calibration results indicates a successful calibration.

Advanced calibration features can be found in the Tobii Eye Control Options.

Adjusting Settings

All of the eye control settings listed below are accessible by the eye control user within Communicator in “Tobii Eye Tracker Settings”. These settings may also be adjusted in Tobii Eye Control Options. There are three eye control click types: dwell, blink, or switch. (see D)

I. Dwell allows the user to gaze for a defined period of time at a button in order to select that button. In the dwell



setting, you are able to choose that dwell time.

Tip: New users generally start around 1000ms (=1 second) or slightly greater. With practice and experience in using dwell, most people will want to reduce their dwell time so that they can access familiar content faster.

Getting Started

- 2. Switch** allows the user to gaze at a button to initially choose it and press an external switch to confirm the selection of that button. In the switch setting you can choose the parameters of the switch press speed.
- 3. Blink** requires the individual to gaze at the desired button and blink to confirm selection of that button. In the blink setting, you are able to choose the minimum and maximum durations of eye closure that count towards the blink.

Feedback

The feedback settings adjust the dot that the user sees when making selections. Choose the feedback dot color, size, and type in this menu. Available feedback types are listed next to the corresponding types of eye control access: switch, blink, dwell.

These settings can be found within Tobii Eye Control Options and are eye control accessible within Tobii Communicator. (see E)



Note: For many people new to eye control, it is easiest to start with larger buttons and fewer buttons, or with a familiar page set layout. We also recommend taking frequent breaks when first using eye control.

Tobii Support:

SWEDEN/GLOBAL

Phone: +46 8 522 950 10
support@tobii.com
www.tobii.com
Support hours: 8 am - 6 pm
Between July-August: 9am - 5 pm
(Central European Time, GMT+1)

GERMANY

+49 69 24 75 03 4-28
support@tobii.com
www.tobii.com
Support hours: 8 am - 6 pm
Between July-August: 9 am - 5 pm
(Central European Time, GMT+1)

NORTH AMERICA

Toll-Free: +1-800-793-9227
Phone: +1-781-461-8200
techsupport@tobiiATI.com
www.tobiiati.com
Support hours: 9 am – 9 pm
(US Eastern Standard Time)

JAPAN

+81-3-5793-3316
support.jp@tobii.com
www.tobii.co.jp
Support hours: 9 am – 5.30 pm
(GMT+9)

© Tobii®. Illustrations and specifications do not necessarily apply to products and services offered in each local market. Technical specifications are subject to change without prior notice. All other trademarks are the property of their respective owners.

EMEA

Tobii Technology AB
Karlsrovägen 2D
S-182 53 Danderyd
Sweden
Phone: +46 8 663 69 90
Fax: +46 8 30 14 00
sales@tobii.com

CENTRAL EUROPE

Tobii Technology GmbH
Niedenau 45
D-60325 Frankfurt am Main
Germany
Phone: +49 69 24 75 03 40
Fax: +49 69 24 75 03 429
sales.de@tobii.com

NORWAY

Tobii Norge
Thormøhlens gate 55
5008 Bergen
Norway
Phone: +47 55 55 10 60
Fax: +47 55 55 10 61
sales.no@tobii.com

ASIA

Tobii Technology, Ltd.
3-4-13 Takanawa, Minato-ku
Tokyo 108-0074
Japan
Phone: +81-3-5793-3316
Fax: +81-3-5793-3317
sales.jp@tobii.com

NORTH AMERICA

Tobii ATI
333 Elm Street
Dedham, MA 02026
Toll-Free: 800-793-9227
Phone: 781-461-8200
Fax: 781-461-8213
Web: www.tobiiati.com
sales.us@tobii.com