

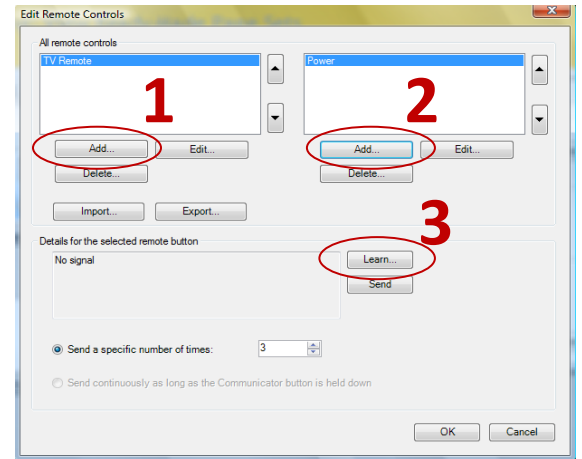
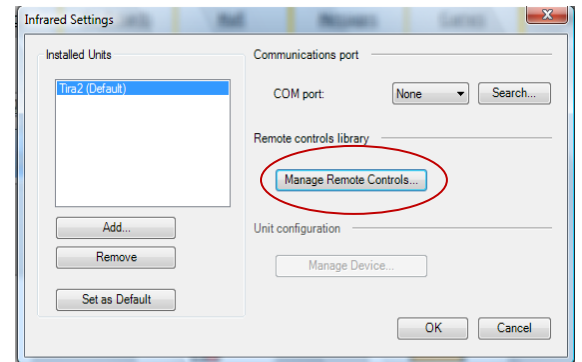
Programming IR/Environmental Controls

Step One: Ensure IR is Enabled

1. Open C-Series Hardware Options
2. Choose **Environmental Control**
3. Ensure the box next to **Tira** is checked

Step Two: Communicator--Learn the IR signals

1. Launch Tobii Communicator
2. Choose **Settings**
3. Choose **Infrared Settings**
4. Choose **Manage Remote Controls**
5. Choose **Add**
6. Type in the name of the Remote Control, such as "TV"
7. Select **Ok**
8. Choose **Add** on the right side of the screen
9. Type in the name of the button, such as "Power"
10. Select **Ok**
11. Choose **Learn**
12. Point the remote control towards the C-Series IR panel and press the Power button
13. Test out the new code by selecting **Send**
14. The C-Series should power on the TV.
15. Choose **Ok**



Step Three: Communicator –Program the page set

1. Access the page set you wish to use to control the TV
2. Go into Edit Mode (F10 > View > Edit View or Button B)
3. Double click the button you wish to use to power on the TV
4. In the Smart Button and Actions dialog box, choose **Add**
5. Ensure **Show all available actions** is checked
6. Choose the **Infrared tab**
7. Select **Send Infrared Signal**
8. Choose **Add**
9. Choose **Use a signal from the remote control library**
10. Select **From library**
11. Choose **TV** from the Remote Control menu
12. Choose **Power** from the Button menu
13. Select **Ok**
14. Select **Ok**
15. Select **Save**

