

# Getting Started with the Tobii C-Series



# Getting Started with the C-Series

This Guide is intended to help you set up and start using your C-Series device.

The C-Series comes with its own stand. The stand can be opened so the C-Series is upright, or it can be folded down to use the device while laying flat on a table or desk. The stand should be folded down if the C-Series is worn on the body with a shoulder strap.

Additionally, the C-Series is compatible with a variety of mounting systems. The attached stand will need to be removed in order to attach the mounting bracket of your choice. Please refer to your mounting system's User's Manual for further information.

## Installing the Batteries

To check the battery power level, depress the “push” button on the back of the battery. (see A) The green lights indicate what percentage of battery power remains in that battery.

**Note:** Batteries are “hot-swappable” and can be interchanged and/or replaced with an extra set of C-Series batteries. Also note that batteries are delivered with a half charge.

Place the C-Series face down on a non-scratchy surface. Slide the battery into the back of the device. The rubber “feet” of the battery slide in last and are at the bottom end of the device. You will hear a click sound as the batteries lock into place. (see B, C, D)

To remove the batteries, place the C-Series face down on a stable surface. Use both hands to slide the rubber feet apart on the battery. You will hear clicks as they are released. Lift the battery up and out of the device.

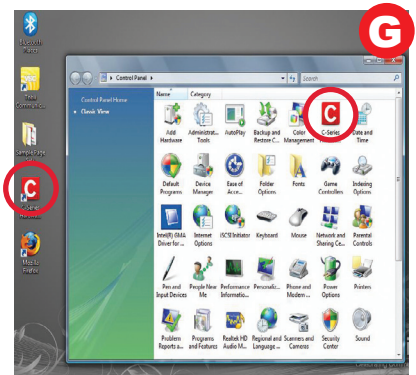
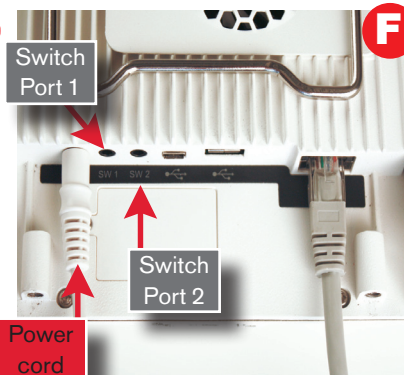
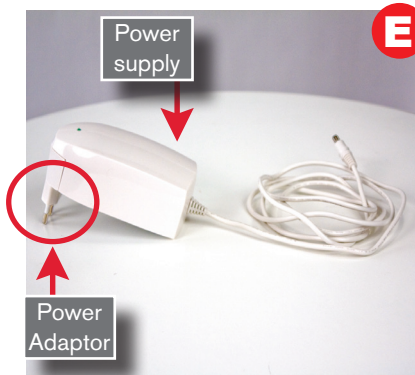


The folding stand comes with the C-Series device.

⚠ Folding stand not for use with the CI5 or with a CEye attached.



Installing the batteries and checking the power level.



## Turning on the C-Series

1. Assemble the power supply by plugging in the power adaptor to the supply. (see E)
2. Put the power cord into the bottom of the C-Series and plug in. (see F)

**Note:** New batteries are delivered with a half-charge.

3. Press the top, right-side button on the C-Series to turn the unit on. Two green lights will briefly flash on either side of the screen. This indicates the device is starting up.
4. Safety information will display when the device first starts. Read that information and follow the instructions as directed.

**For Example:** When starting the device for the first time the speakers are inactive, as they are quite powerful and it is possible for them to operate at a high volume. A disclaimer must be read and agreed upon in order to activate the speakers.

## Access Method Setup

The C-Series can be accessed in a variety of ways: touch access, touch access with a keyguard, switch access, or eye control. In order to utilize keyguards or eye control, those items must be purchased

as additional items. Further instructions on installation of those items can be found in the User's Manual.

## Setup for Touch Access

To access the C-Series via the touch screen optimally, calibrate the touch screen. To calibrate the touch screen: Open the C-Series Hardware Options menu from the desktop shortcut. (see G) Choose Touch Screen. Click Calibrate.

Next, follow the instructions given on the screen.

## Setup for Eye Control

If your C-Series device is to be used with eye control, a CEye must be purchased. The CEye comes with a Getting Started Guide specific to using the CEye in conjunction with the C-Series.

## Setup for Switch Scanning

The C-Series has two switch ports available for switch scanning. Plug the switch into the appropriate switch port. For single-switch users, plug the switch into port 1. (see F)

To enable the switch to power on and power off the C-Series device, open **C-Series Hardware Options > Switches**, and check the appropriate boxes. (see H on next page)

To program the switch to emulate a key press, open **C-Series Hardware Options > Switches** and choose Set Action, on the right of the screen.

**Note:** If the switch is set to emulate a key press, the key input settings must be the same as in the communication software scanning settings if scanning is the input method.

## Adjusting Settings

Settings for volume, backlight, licenses, wireless, and other hardware features are adjusted through **Windows Start Menu > Control Panel (Classic View) > C-Series Hardware Options**, or by double-clicking the C-Series Hardware Options shortcut on the desktop. (see G)

Choose the menu item on the left side of the C-Series Hardware Options to make adjustments to the hardware on your device. Descriptions of the features are provided in the dialog box. (see H on next page)

## Quick Access Button Settings

The three buttons on the side of your C-Series device are customizable to perform a variety of actions. In the **C-Series Hardware Options > Buttons** menu, choose Set Action to the right of Button A.

## Communication Software

**Note:** In this menu you can disable the button from performing any action by choosing “No Action Selected.” Alternatively, select the other actions to view the possible functions for each action. Detailed descriptions of all actions are available in the C-Series User’s Manual.

## Communication Software

If purchased, the C-Series device comes with communication software pre-installed.

If the communication software does not immediately start. Double click the shortcut for that software on the Windows desktop. Alternatively, open the software through the Start menu/All Programs.

To set the communication software to automatically launch when the C-Series starts up:

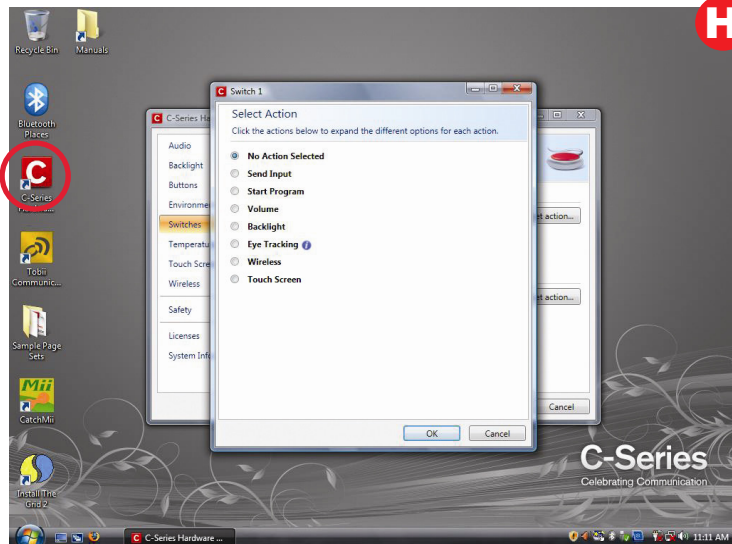
1. In the Windows desktop, open the Start Menu.
2. Select All Programs
3. Right Click on Startup
4. Select Open
5. Drag the communication software shortcut from the desktop into the Startup Folder.

(see I)

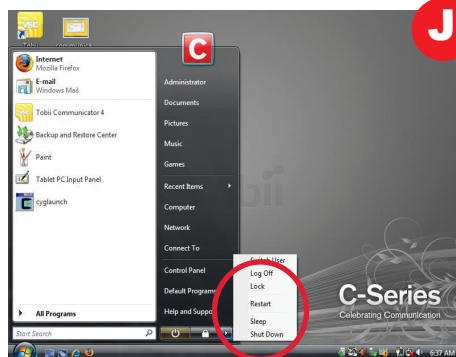
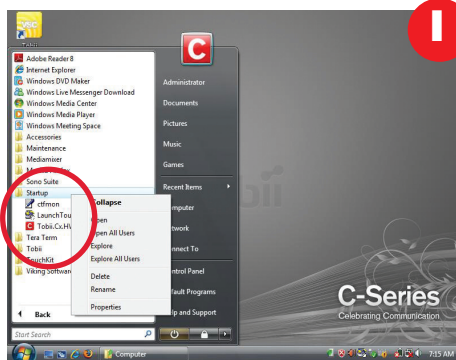
## Shut Down

To shut down the C-Series, close all programs. In the Windows desktop, open the Start Menu and touch the arrow on the bottom, far right. Select Shut Down. (see J)

**Note:** Alternatively, one of the side buttons or the switch may be programmed for Shut Down.



Adjusting switch settings in C-Series Hardware Options.



**tobii**  
www.tobii.com

© Tobii®, Illustrations and specifications do not necessarily apply to products and services offered in each local market. Technical specifications are subject to change without prior notice. All other trademarks are the property of their respective owners.

### EMEA

Tobii Technology AB  
Karlsrovägen 2D  
S-182 53 Danderyd  
Sweden  
Phone: +46 8 663 69 90  
Fax: +46 8 30 14 00  
sales@tobii.com

### CENTRAL EUROPE

Tobii Technology GmbH  
Niedenau 45  
D-60325 Frankfurt am Main  
Germany  
Phone: +49 69 24 75 03 40  
Fax: +49 69 24 75 03 429  
sales.de@tobii.com

### NORWAY

Tobii Norge  
Thormøhlens gate 55  
5008 Bergen  
Norway  
Phone: +47 55 55 10 60  
Fax: +47 55 55 10 61  
sales.no@tobii.com

### ASIA

Tobii Technology, Ltd.  
3-4-13 Takanawa, Minato-ku  
Tokyo 108-0074  
Japan  
Phone: +81-3-5793-3316  
Fax: +81-3-5793-3317  
sales.jp@tobii.com

### NORTH AMERICA

Tobii ATI  
333 Elm Street  
Dedham, MA 02026  
Toll-Free: 800-793-9227  
Phone: 781-461-8200  
Fax: 781-461-8213  
Web: www.tobiiati.com  
sales.us@tobii.com